

JOIN the NATIFLife Network and enjoy your ADVANTAGES!

www.natiflife-project.eu

Novel services will be available for entities belonging the NATIFLife Network:

NETWORKING

- Increasing Visibility, exchange of Best Practice among Stakeholders, Demand/ Offer of Needs/Technology.
- Developing Joint Research on innovative AT, also through the participation to research projects.

TRAINING AND HANDS ON SESSIONS ON ASSISTIVE TECHNOLOGY

- Training and Hands On Sessions on Assistive Technology and User Centered Design.

SHARING R&D LABS FACILITIES

- Sharing facilities and equipments to develop joint activities of industrial interest: Rapid Prototyping of wearable and flexible sensors, Smart Sensing Embedded Systems, Robotic platforms.

EXPLOITING LIVING LABS

- Assessment of Assistive Technologies by End-Users involvement.

The NATIFLife Project

The NATIFLife project aims at developing an innovative framework of assistive technology to provide elders with autonomy, thus enabling de-hospitalization, staying in places of origin and avoiding to break the bonds with families. The strategic cross-border Italy-Malta cooperation will tackle the challenge of Active Ageing exploiting the contamination between stakeholders with complementary skills: enterprise, research centres, institutions, users. The development of high technological assistive solutions can determine a redesign of private and public services.



University of Catania (DIEEI)

Viale A. Doria 6, 95125, Catania, Italy

Tel. 095 7382601

info@natiflife-project.eu

www.natiflife-project.eu



NATIFLife

**A Network of Assistive
Technology for an
Independent and
Functional Life**

*Bringing Assistive Technology
to End-Users.*

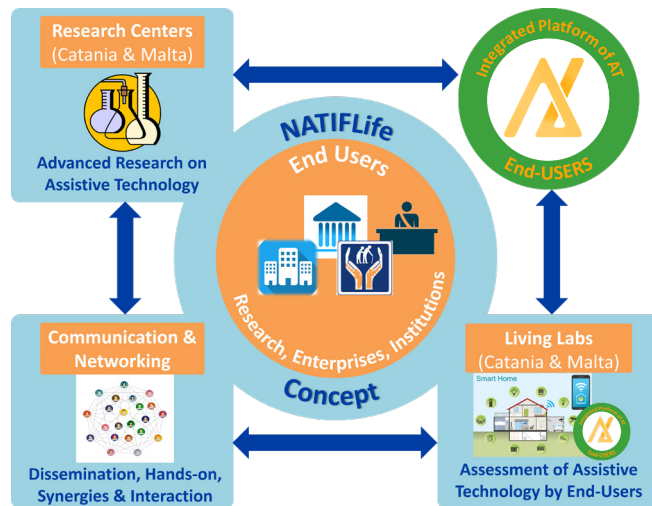


 **Interreg**
Italia-Malta
 **NATIFLife**

Fondo Europeo di Sviluppo Regionale
European Regional Development Fund



The NATIFLIFE Concept



The NATIFLIFE Objectives



Communication and networking

The NATIFLife Network enables Contamination at the Cross-Border Level between Stakeholders in Assistive Technology (Association, Private/ Public Sector, R&D), to increase Visibility, exchange Best Practice, facilitate Needs/Technology-Demand/ Offer.



Two research centers

The Two Research Centers, in Catania and Malta, will be complementary reinforced to perform disruptive research in the field of assistive technologies and to become a reference for enterprises.



Join the NATIFLife Network!

Explore your own advantages

info@natiflife-project.eu
www.natiflife-project.eu



Platform of Assistive Technologies

The development of an integrated platform of assistive technology compliant with traditional and innovative solutions, will improve of the life quality of elderly and people with mobility impairments.



Two Pilot Demo Sites

The Two PDS are located in Catania and Malta to develop and test innovative assistive technology by End-Users.

